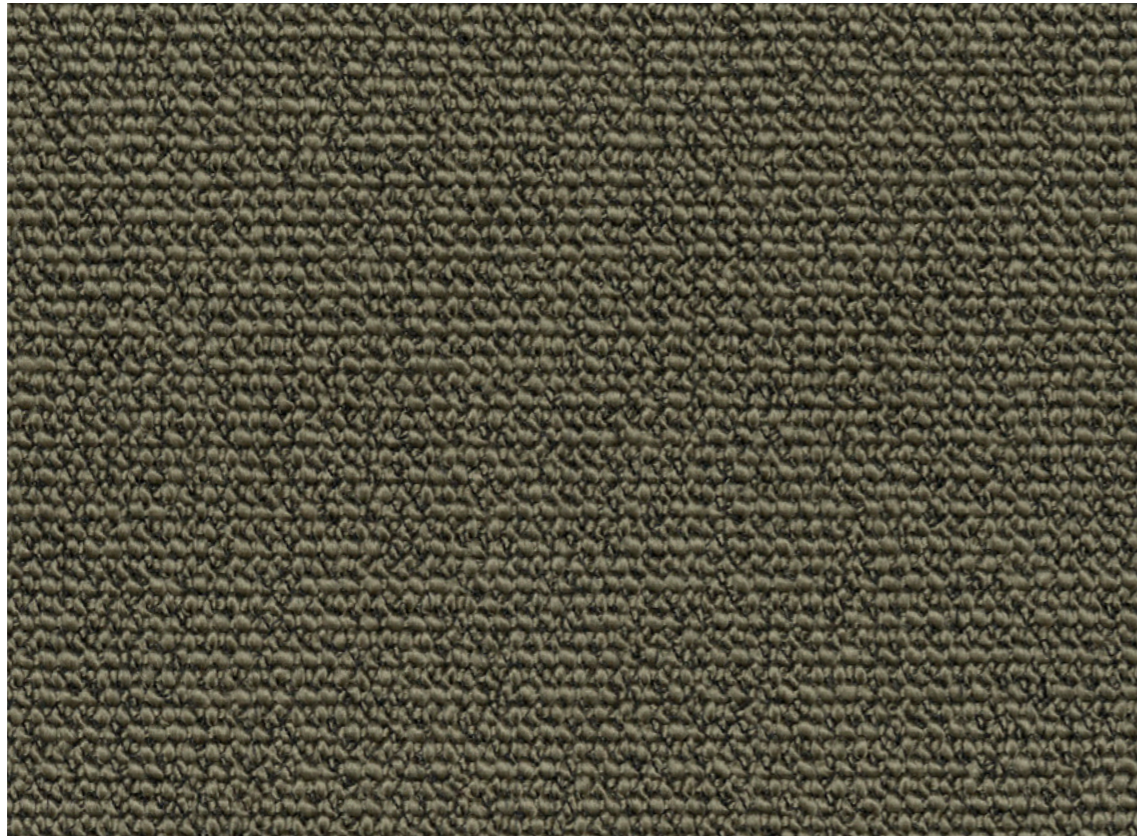


OCEAN



OCEAN 21

OCEAN



3



21



32



50

OCEAN



52



80

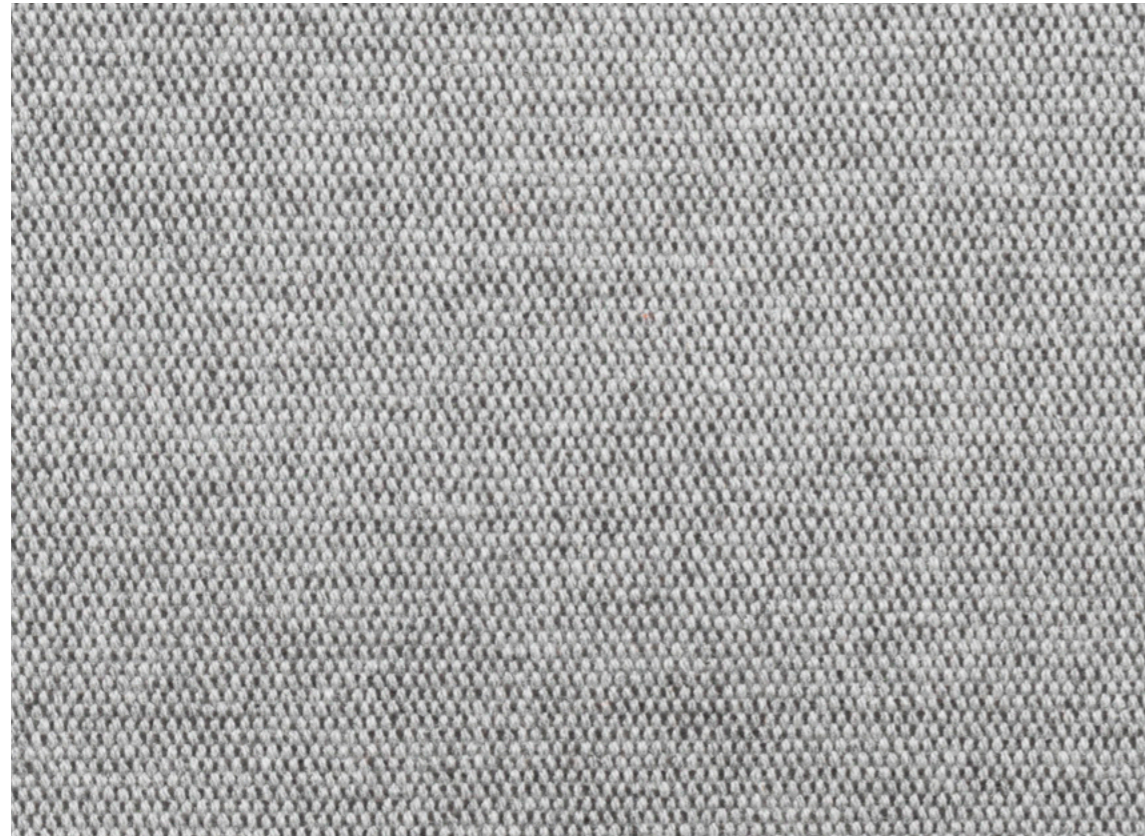


601

OCEAN BY ROHLER

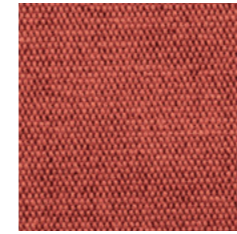
COMPOSITION	74% POLYACRYLIC 26% POLYESTER
WEIGHT (G/M ²)	593
MARTINDALE ABRASION (RUBS)	30.000
PILLING (SCALE 1-5)	-5 (ISO 12945-2)
RUBBING DRY (SCALE 1-5)	4-5 (ISO 105-X12)
RUBBING WET (SCALE 1-5)	3-4 (ISO 105-X12)
LIGHTFASTNESS (SCALE 1-8)	6-7 (ISO 105 B02)
FIRE TEST	EN 1021 TEIL I CIGARETTE TEST BS 5852 SOURCE O, PART I CIGARETTE TEST CAL. TB 117

VANCOUVER



Vancouver 14

VANCOUVER



04



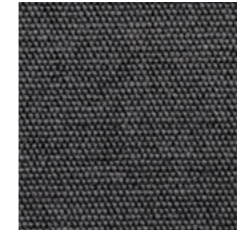
08



10



12



13



14

VANCOUVER

VANCOUVER BY ARVE

COMPOSITION	52% COTTON 48% ACRYLIC
WEIGHT (G/M ²)	860
MARTINDALE ABRASION (RUBS)	40.000
PILLING (SCALE 1-5)	4 (ISO 12945-2)
RUBBING DRY (SCALE 1-5)	4 (ISO 105-X12)
RUBBING WET (SCALE 1-5)	3 (ISO 105-X12)
LIGHTFASTNESS (SCALE 1-8)	4-5 (ISO 105 B02)

COLOR CARD – MUUTO

WOOLY

MUUTO

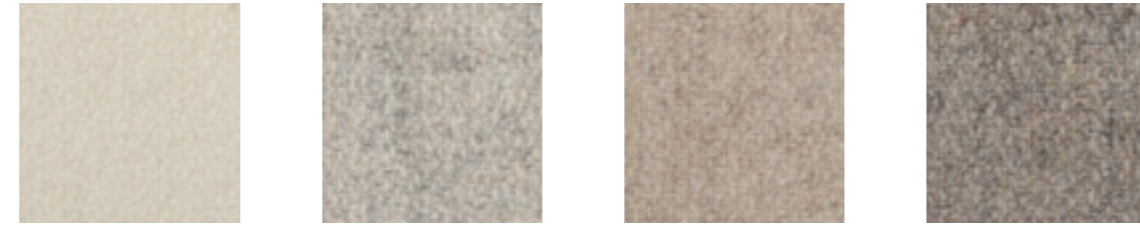


WOOLY

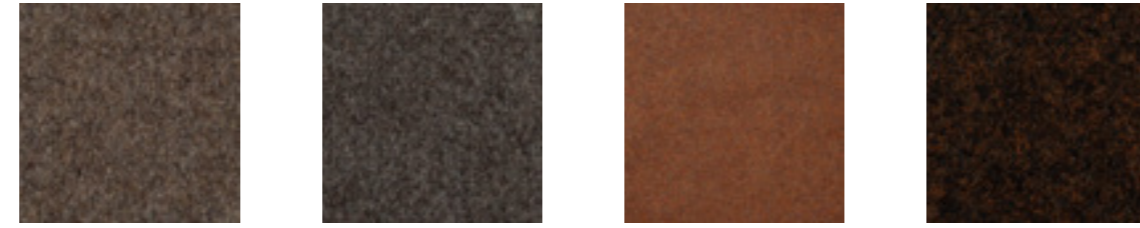
1007 NAVY

WOOLY BY NEVOTEX

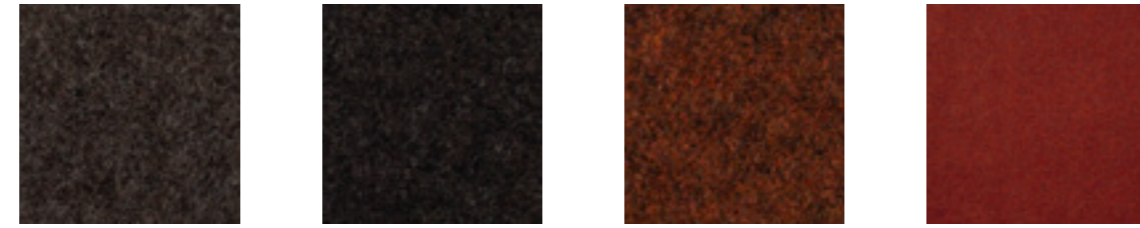
WIDTH (CM) 150
 COMPOSITION 70% WOOL 25% POLYAMIDE, 5% OTHERS
 WEIGHT (G/M²) 400
 MARTINDALE ABRASION (RUBS) 150,000 (ISO 12947-2)
 PILLING (SCALE 1-5) 4-5 (ISO 12945-2)
 RUBBING DRY (SCALE 1-5) 4-5 (ISO 105-X12)
 RUBBING WET (SCALE 1-5) 4 (ISO 105-X12)
 LIGHTFASTNESS (SCALE 1-8) 6 (ISO 105 B02)
 FIRE TEST BS 5852 - PART 1, CAL TB 117, EN 1021-1&2



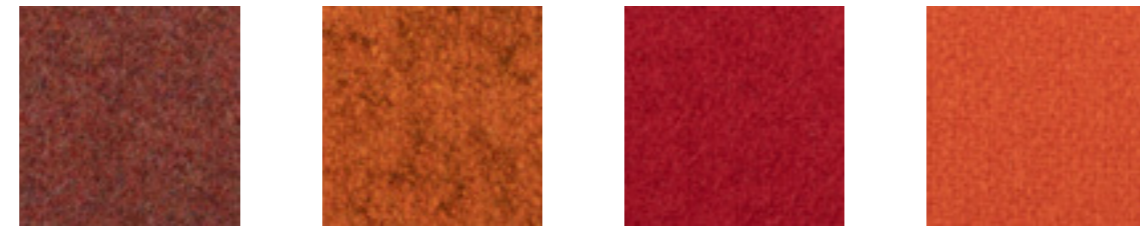
1016 BONE 2256 IVORY MELANGE 1037 SAND 2151 BEIGE



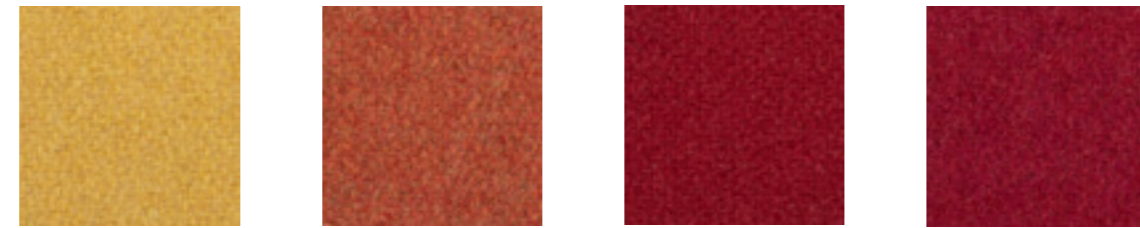
1026 LIGHT BROWN 9202 TAUPE 380037 RUST 2153 JAVA MELANGE



1008 BROWN 10088 EBONY 1040 BRICK MELANGE 2301 MARSALA



2016B DARK TERRACOTTA 2278 ORANGE MELANGE 2011B RED 9145 PUMPKIN



2272 DIJON 2012B TERRACOTTA 2011 TULIP 2142 RASPBERRY

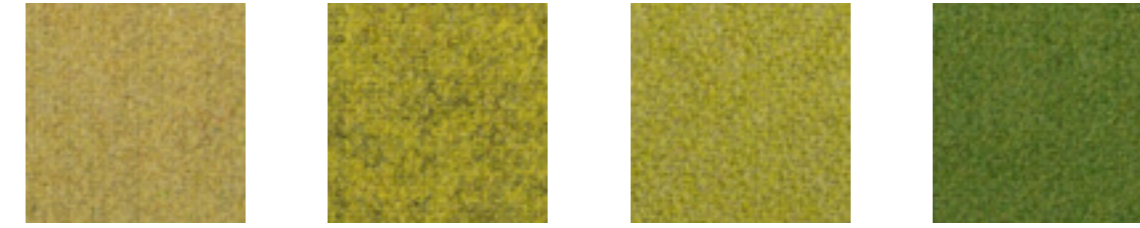


9233 WINE 9872 PINK 2014 PLUM 2236 AUBERGINE

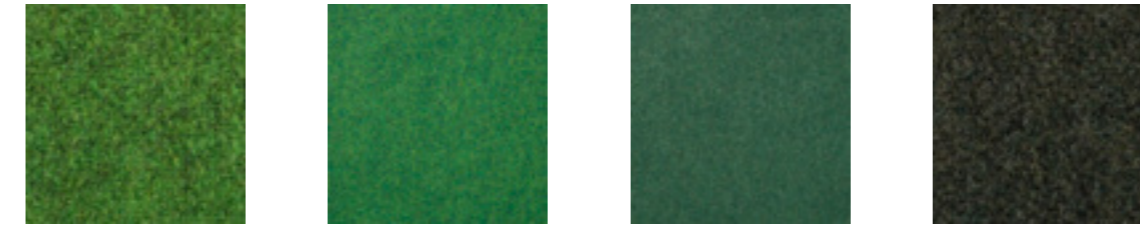
WOOLY



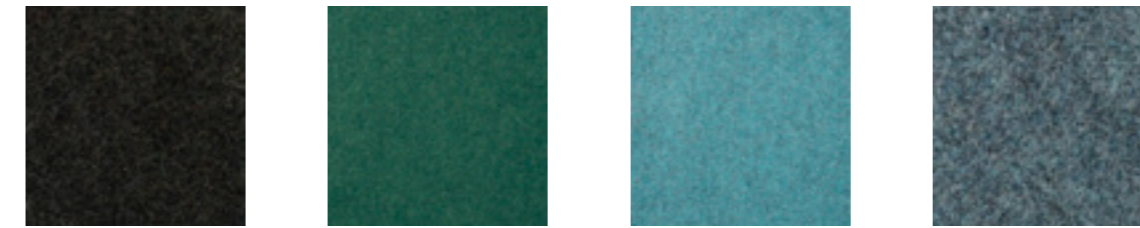
2020 LILAC MELANGE 1044 CERISE 2255 DARK LILAC 0091 BERRY



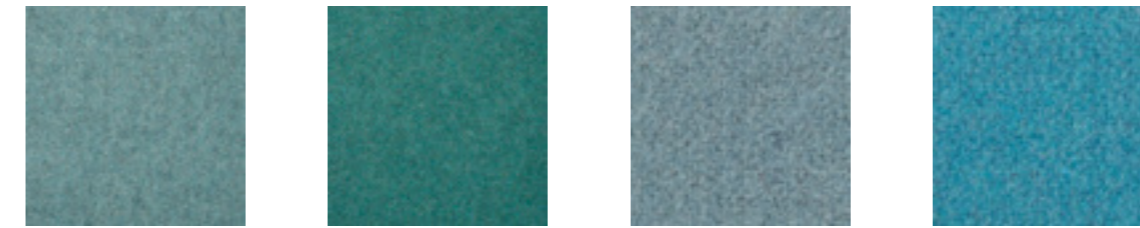
2252 SOFT GREEN 2270 LIME 9759 LEAF 2079 GREEN



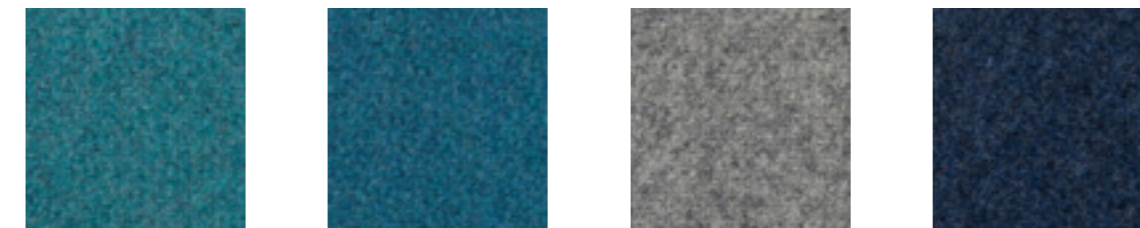
2269 EMERALD 2302 COURT 840069 JUNIPER 1011 BOTTLE GREEN



1010 FOREST 849139 TEAL 22882287 AQUAMARIN 2288 SODA

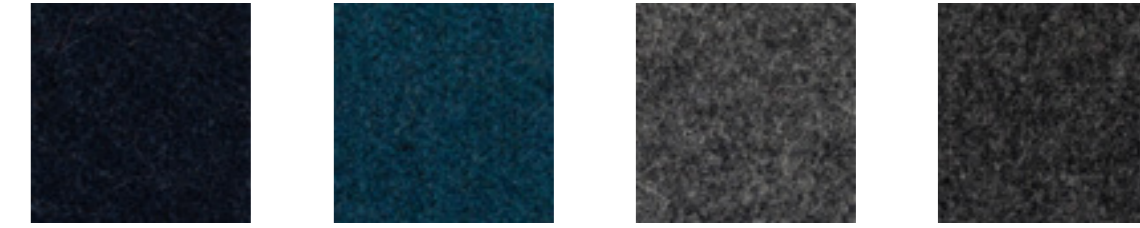


2288B1 LAPIS 849287 LAGOON 9860 SOFT BLUE 0106 TURQUISE

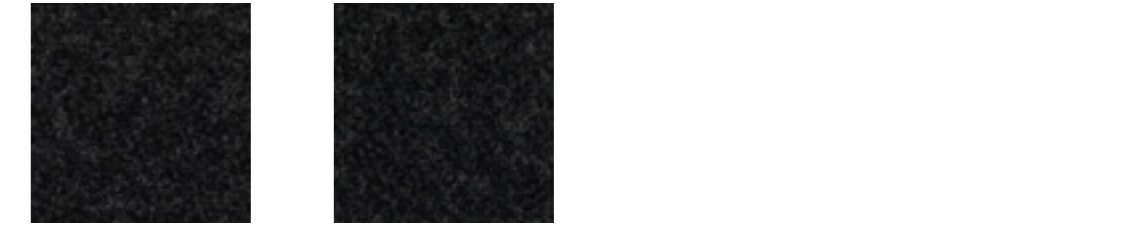


2287 OPAL 2240 PETROL 1000 LIGHT GREY 2019 MARINE

WOOLY



1007 NAVY 2279 OCEAN 1042 GRAFIT 1001 ANTRACIT



1002 KOKS 1003 BLACK

WOOLY

ENDURE LEATHER



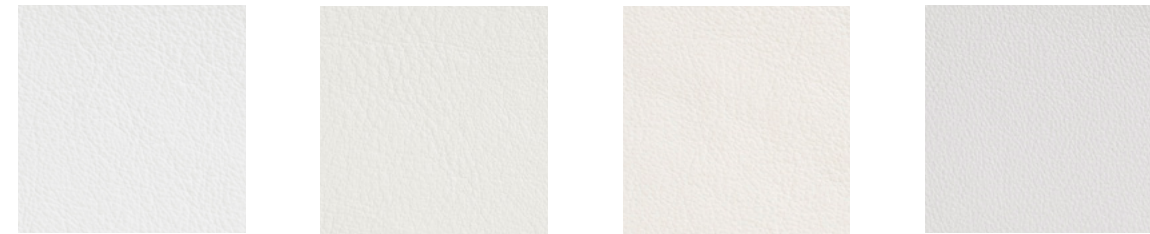
33004 / COGN / COGNAC

ENDURE LEATHER

ENDURE – SEMI-ANILINE LEATHER

SEMI-ANILINE LEATHER WITH HIGH DURABILITY, MAKING IT IDEAL FOR CONTRACT ENVIRONMENTS. LEATHER FROM SCANDINAVIAN RAW HIDES. THE LEATHER IS DYED THROUGH USING A CHROME FREE TANNING PROCESS. ALSO AVAILABLE IN CUSTOM COLORS IN A MINIMUM OF 1 HIDE.

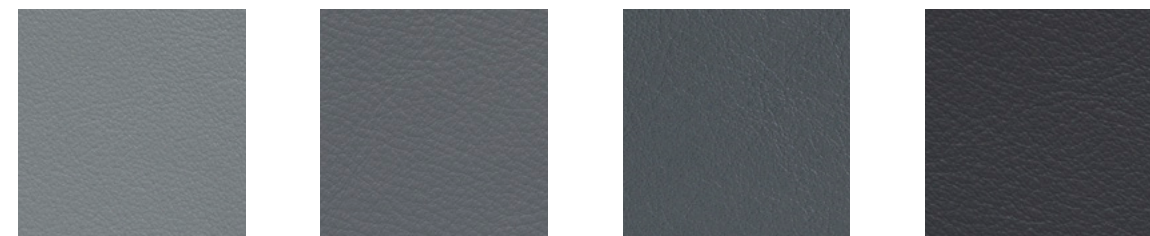
THICKNESS (MM)	1,0-1,3
LIGHTFASTNESS (SCALE 1-8)	6 (ISO 105-BO2)
RUBBING, DRY, 2000 RUBBINGS (SCALE 1-5)	4 (ISO 11640)
RUBBING, WET, 80 RUBBINGS (SCALE 1-5)	4 (ISO 11640)
RUBBING, SWEAT, 50 RUBBINGS (SCALE 1-5)	4 (ISO 11640)
TEAR STRENGTH (N/MM)	20 (DIN 53329)



00109 / WHIT / WHITE 00100 / CWIT / COLD WHITE 00118 / WWIT / WARM WHITE 01085 / PEGY / PALE GREY



01037 / MTGR / MIST GREY 11033 / STGY / SOFT GREY 11049 / GREY / GREY 11073 / LIGY / LIGHT GREY



01043 / CLGY / COOL GREY 11152 / SEGY / SABRE GREY 71017 / DKGY / DARK GREY 11056 / CCGY / CHARCOAL GREY



91102 / ANTH / ANTRACIT 93068 / ANBK / ANTRACIT BLACK 99999 / BLCK / BLACK 98087 / DKAK / DARK KHAKI



01061 / LUPE / LIGHT TAUPE 13072 / GRGE / GREIGE 13087 / DKGG / DARK GREIGE 13048 / STGR / STONE GREY



01021 / LTGR / LIGHT GREIGE 01003 / KAKI / KHAKI 02122 / YWGG / YELLOW GREIGE 02119 / STGE / SOFT GREIGE

ENDURE LEATHER



93099 / BRWN / BROWN 93129 / DKBW / DARK BROWN 93109 / DCLY / DARK CLAY 33077 / LIBW / LIGHT BROWN



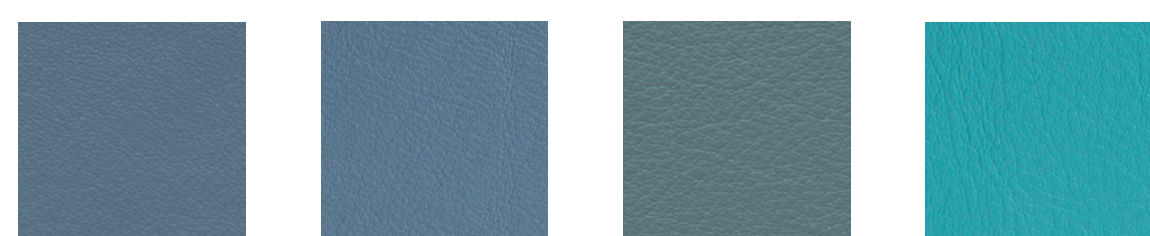
33001 / BUUR / BURNT UMBER 43283 / OCHR / OCHRE 33004 / COGN / COGNAC 54035 / BRND / BRANDY



43054 / CLAY / CLAY 22030 / SAND / SAND 22024 / BEIG / BEIGE 97038 / BKBL / BLACK BLUE



77127 / DKBL / DARK BLUE 77074 / RLBE / ROYAL BLUE 77237 / DMBE / DENIM BLUE 77158 / NABL / NAVI BLUE



07006 / SLBL / STEEL BLUE 17027 / GRBL / GREY BLUE 87021 / BEGN / BLUE GREEN 78023 / EMLD / EMERALD



08057 / MINT / MINT 08124 / JGRN / JADE GREEN 88019 / GREN / GREEN 98015 / DKGN / DARK GREEN

ENDURE LEATHER



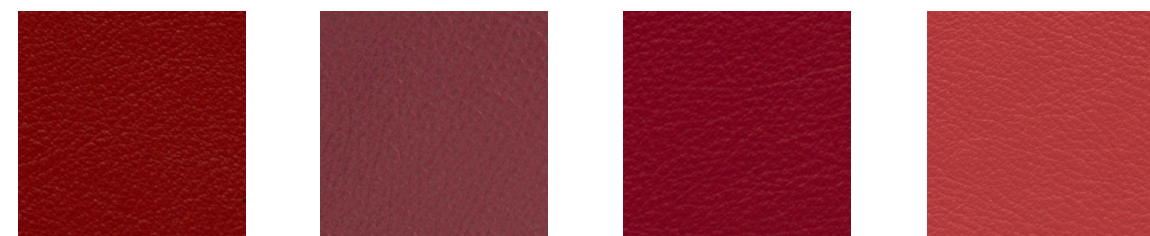
08055 / SAGN / SAGE GREEN 08021 / DGRN / DUSTY GREEN 98047 / OLVE / OLIVE 08038 / BGRN / BEIGE GREEN



75014 / PURP / PURPLE 75010 / PLYM / PLYM 16377 / LPUP / LIGHT PURPLE 16003 / LAER / LAVENDER



95006 / DKBY / DARK BURGUNDY 66006 / MALUV / MALUVE 05029 / ARED / AMBER RED 54021 / TACA / TERRACOTTA



45035 / BRED / BURNT RED 35126 / DKRD / DARK RED 75011 / CRED / CARMINE RED 05145 / PINK / PINK



55002 / REDV / RED VELVET 05011 / RED / RED 46053 / TROS / TAN ROSE 45065 / DKOG / DARK ORANGE



54033 / ONGE / ORANGE 44012 / DKYE / DARK YELLOW

ENDURE LEATHER

ENDURE LEATHER

REFINE LEATHER



691 / STON / STONE

REFINE – ANILINE LEATHER

GRAIN LEATHER FROM EUROPEAN RAW HIDES. THE LEATHER IS DYED THROUGH, CHROME TANNED AND PRODUCED WITHOUT THE USE OF PCP AND CFC WHICH CAN BE DAMAGING TO THE ENVIRONMENT.

THICKNESS (MM)	1,0-1,2
FLEXING ENDURANCE	≥30.000 (IUP 20 / EN ISO 5402)
LIGHTFASTNESS (SCALE 1-8)	3 (EN ISO 105-B02)
RUBBING, DRY, 100 RUBBINGS (SCALE 1-5)	≥3 (IUF 450 / EN ISO 11640)
RUBBING, WET, 20 RUBBINGS (SCALE 1-5)	≥3 (IUF 450 / EN ISO 11640)
RUBBING, SWEAT, 20 RUBBINGS (SCALE 1-5)	≥3 (IUF 450 / EN ISO 11640)
TEAR STRENGTH (N)	≥20 (IUP 40 / EN ISO 3377-1)
FIRE TEST	BS5852- PART 1, CAL TB 117, EN 1021-1&2

REFINE LEATHER



550 / YELW / YELLOW



565 / ONGE / ORANGE



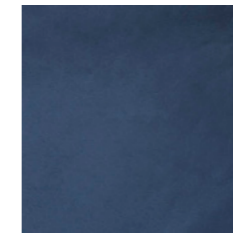
4009 / RED / RED



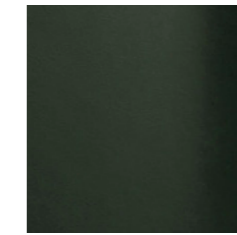
692 / LGRN / LIGHT GREEN



778 / TRKS / TURKIS



779 / SBLE / SEA BLUE



681 / DKGR / DARK GREEN



7008 / PURP / PURPLE



BEIG / BEIGE



197 / CREM / CREAM



691 / STON / STONE



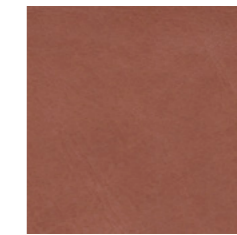
258 / NOUG / NOUGAT



551 / WSKY / WHISKY



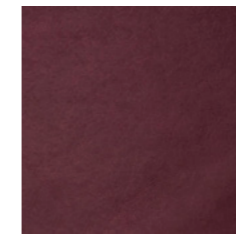
250 / COGN / COGNAC



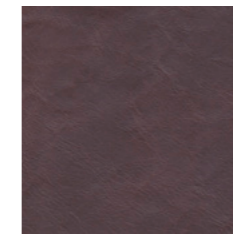
229 / CHUT / CHESTNUT



240 / COPP / COPPER



4060 / FUSC / FUCHSIA



329 / DKBW / DARK BROWN



854 / LIGY / LIGHT GREY



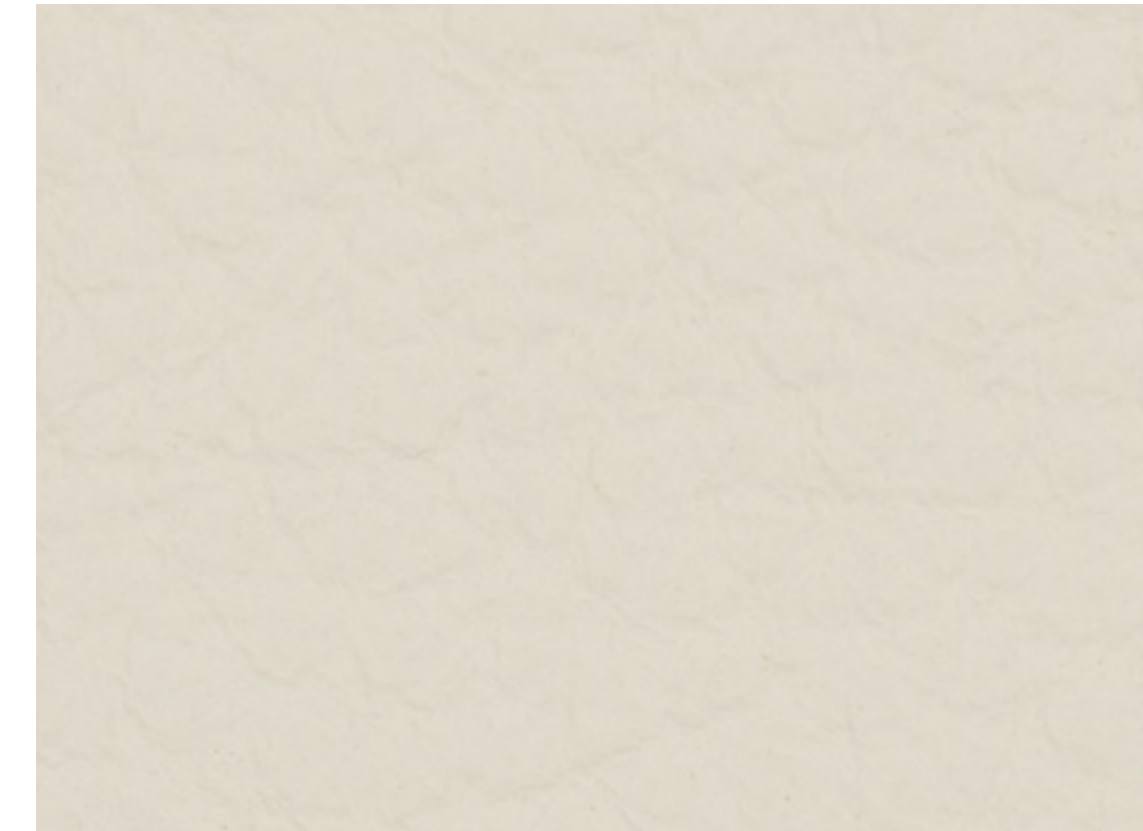
855 / GREY / GREY



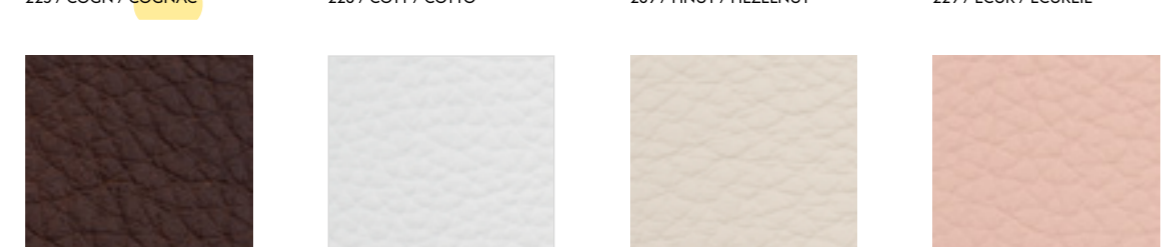
842 / BLCK / BLACK

REFINE LEATHER

EASY LEATHER



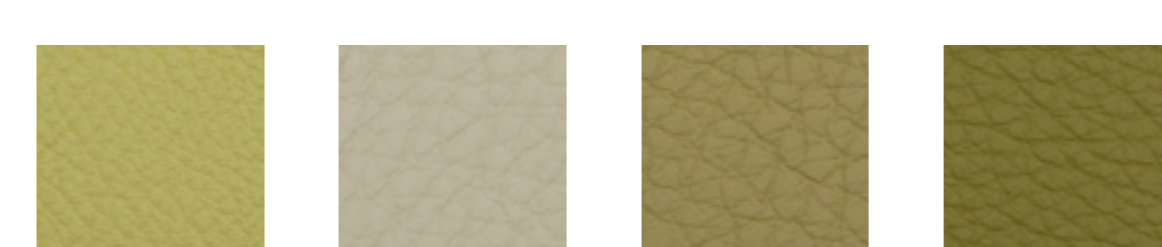
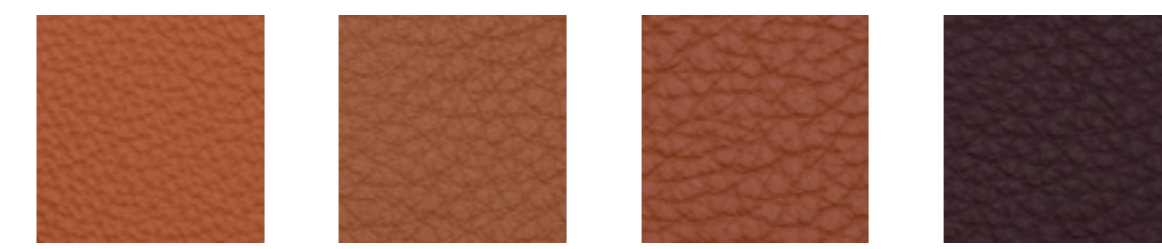
EASY LEATHER



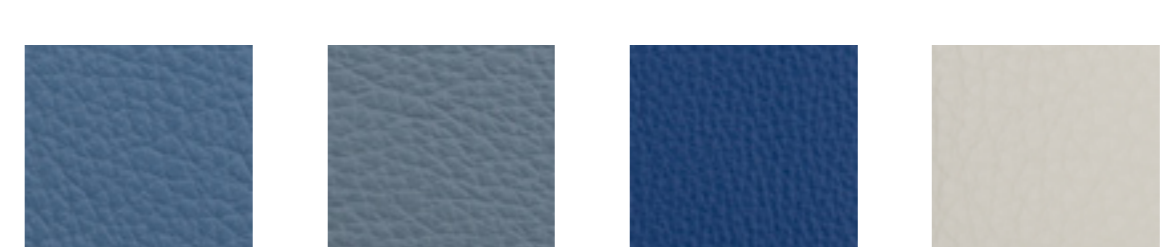
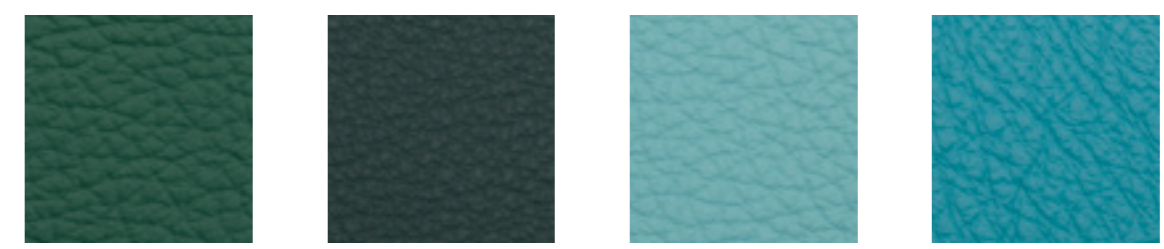
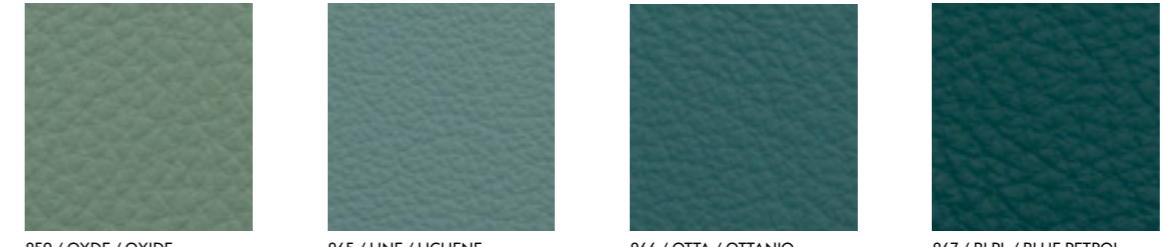
EASY LEATHER



EASY LEATHER



EASY LEATHER



EASY LEATHER



EASY LEATHER

EASY – LIGHTLY BUFFED NATURAL GRAIN

DESIGNED AND PROCESSED IN ITALY. THE LEATHER IS DYED THROUGH, CHROME TANNED AND FINISHING IS WITH RESINS AND PIGMENTS.

THICKNESS (MM) 1,2-1,4
 FLEXING ENDURANCE, DRY, 50,000 CYCLES NO DAMAGE (EN ISO 5402)
 LIGHTFASTNESS (SCALE 1-8) >=5 (EN ISO 105-B02)
 RUBBING, DRY, 500 RUBBINGS (SCALE 1-5) >=5 (EN ISO 3377-1)
 RUBBING, WET, 250 RUBBINGS (SCALE 1-5) >=4 (EN ISO 11640:1998)
 RUBBING, SWEAT, 80 RUBBINGS (SCALE 1-5) >=4 (EN ISO 11640:1998, ISO 11641 PH8)
 FIRETEST BS5852- PART 1, CAL TB 117, EN 1021-1&2

Be aware that the tones of digital color cards can vary from device to device. We suggest that you review a physical color sample of your selected color prior to proceeding with your order.

